

Bear Foot Luxury Flooring 5.5mm SPC

INSTALLATION & MAINTANENCE INSTRUCTIONS

Tools Required

- Utility Knife
- Tape Measure
- Straight Edge
- 5/16" Spacers

THIS PRODUCT HAS UNDERLAYMENT PRE-ATTACHED

Prior to Installation

- Carefully check flooring material for any defects. Contact your supplier immediately if any defects are found.
- All heating and cooling systems must be installed and functional for 14 days prior to installation.
- Room temperature shall be no less than 65°F (18°C) for a 24 hour period before, during and after installation.
- Remove quarter round, baseboard molding, or cove base.
- Undercut doorway moldings by the thickness of the flooring.
- Cartons must be stored horizontally at all times.
- Protect carton corners from damage.
- Luxury Plank flooring must be acclimated at the jobsite for 48 hours prior to installation.

Wood Substrates

Wood floors must be double construction with a minimum thickness of 1" and free from spring deflection. Top layer of plywood shall be 1.4" minimum thickness, underlayment grade plywood.

Concrete Substrates

Luxury Vinyl Plank flooring may be installed over on grade, above grade, or below grade concrete subfloors. Concrete floors shall be constructed in accordance with the American Concrete Institute (ACI) 302.1 Guide for Concrete Floor and Slab Construction. Concrete shall be finished and cured according to ACI guidelines and have a minimum compressive strength of 3500 psi. Installation of moisture vapor barrier is recommended prior to the pouring of on or below grade slabs. Moisture vapor transmission shall not exceed 3lbs per 4000 sq. ft./24 hours per ASTM F-1869 (Anhydrous Calcium Chloride Test). Moisture may also be tested according to ATM F2170 (Standard Test Method for Determining Relative Humidity in Concrete Floor Slabs using in-situ probes). When tested according to this method, the internal relative humidity shall not exceed 75%. Luxury Vinyl Plank flooring may be installed over gypsum based underlayments. A 0.6mm or above polyfilm moisture barrier is required with all concrete applications. Moisture barrier must cover the entire installation area, overlap by at least 18" at the seams, and be sealed with moisture proof tape.

Existing Floors

Luxury Vinyl Plank flooring may be installed over most smooth, single layer, hard surface existing floors. Check flooring for any curled areas around the perimeter or at seams and repair if necessary. Use a high-quality cementitious based embossing leveler to smooth and fill the existing floor.

WARNING

Do not sand, dry sweep, dry scrape, drill, saw, bead blast or mechanically chip or pulverize existing resilient flooring, backing, lining felt or asphaltic "cutback" adhesive. These products may contain asbestos fibers or crystalline silica. Avoid creating dust. Inhalation of such dust is a cancer and respiratory tract hazard. This product contains no asbestos.

Substrate Preparation

- All substrates must be dry, clean, smooth, level, free from all existing adhesive residues and free from movement or deflection.
- The substrate must be level to within 3/16" over a 10ft. area.
- Fill and level all plywood seams and concrete cracks, construction joints, control joints, depressions, grooves or other irregularities with a latex fortified, cementitious patching compound.
- Sweep and/or vacuum substrate to remove all dust and debris.

Radiant Heat Requirements

- This flooring is approved for use with hydronic radiant heat systems or electric radiant heated systems that use embedded cables under the subfloor.
- The radiant heat system must not exceed a surface temperature of 84°F.
- All manufacturer instructions for the radiant heat system must be observed, and must not conflict with this installation guide.

Getting Started

- Luxury Plank is a floating floor and should not be glued or nailed to the substrate.
- Luxury Plank is intended for indoor use only.
- Determine in which direction the planks will be installed. It is preferred to lay the planks parallel to the longest room dimension.
- Do not install cabinets on planks.
- Carefully measure the room to determine squareness, width, and length of the last row of planks. The width of the last row must not be less than 2", excluding the tongue. The width of the first row will need to be cut accordingly. The first and last plank in each row must be at least 8" in length.
- A minimum of 5/16" expansion space is required around the perimeter of the room and between all vertical objects.
 - A break or transition is required for any run in one direction that exceeds a length of 50'.
- Inspect all planks for visible defects and damage in a well lit area before and during installation. Do not install damaged planks. The original purchaser is responsible for approval and acceptance of all products.
- During installation, inspect the groove area and remove any debris that may prevent proper assembly of planks.

Installation

1. Begin laying planks from the left side of the starting wall and work to the right side, with the tongue side of the plank facing the starting wall.
2. Place 5/16" spacers along each wall to maintain an expansion space of 5/16" between the flooring and the wall.
3. The end joints of the planks in the first row are assembled by inserting the tongue side into the groove side of the previous plank at a low angle. Gradually lower the plank laterally until the end joint closes, ensuring that the planks are perfectly aligned.
4. Install remaining full planks in the first row.
5. The last plank in the first row will need to be cut. Measure the distance between the wall and the surface of the last full plank. Subtract 5/16" from this measurement to allow for the spacer. If this measurement is less than 8", the length of the first plank in the row must be cut to allow for a longer plank at the end of the row. The first and last plank in each row must be at least 8" in length. Planks are cut using a sharp utility knife and straight edge carpenters square. Score the surface of the plank with a utility knife, and then snap the plank at the score line.
6. The remaining piece cut from the last plank in the first row may serve as the first plank in the second row, provided it is at least 8" long. Always stagger end joints from row to row by a minimum of 8".
7. Install the long side of the first plank of the second row. Remember to place a 5/16" spacer between the wall and the short side of the plank. Insert the tongue side into the groove side of the previous row at a low angle and lower laterally to the substrate.
8. Install the second plank in the second row. Position the long side of the plank with the tongue overlapping the groove of the planks in the previous row by approximately 1/8", then angle the end joint into the previous plank. Angle the plank up and gently push forward until the plank locks into the previous row. Continue installing remaining planks in the second row. It is important to ensure that the first two rows are straight and square as they can affect the entire installation.
9. Continue working from left to right, row by row. Be sure to maintain a 5/16" expansion space around all walls and vertical objects and maintain a random appearance in grain design. Offset end joints by a minimum of 8".

Finishing the Installation

- After all planks have been installed, remove spacers from the perimeter of the room.
- Install transition moldings. Do not fasten any moldings to or through the flooring. Ensure adequate space is left between the flooring and transition to allow for expansion.
- Pre-drill and install quarter round or baseboard molding to the wall. Molding must be sufficient size to cover the 5/16" space between the floor and the wall. Ensure adequate space is left between the molding and flooring to allow for expansion of flooring. Failure to do so can result in peaking.
- Use plywood to cover the top of the flooring when moving heavy furniture or appliances into position.
- Use proper protectors under the legs and feet of the furniture.
- Post-installation temperature must be maintained between 65°F and 90°F, and relative humidity must be maintained between 40% and 70%.

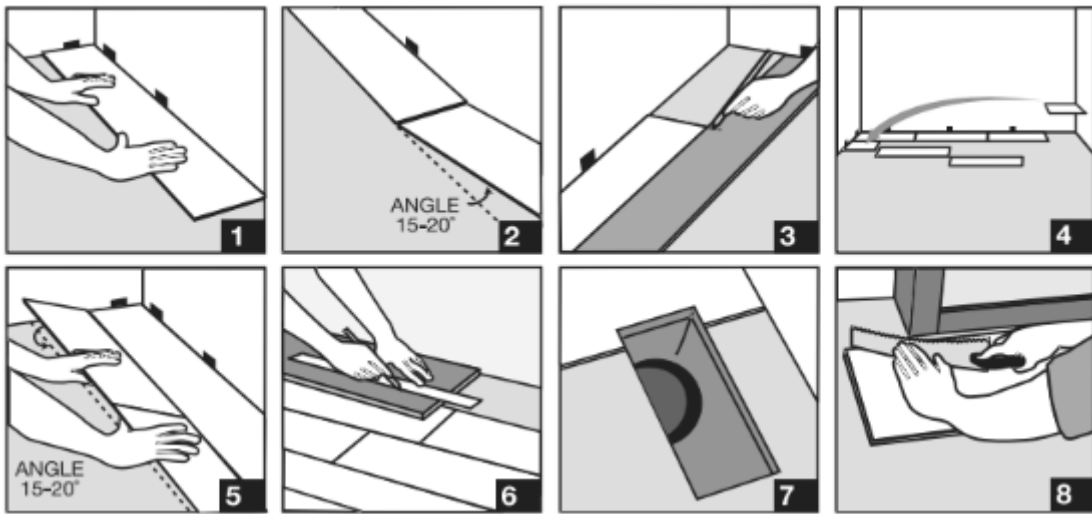
Care & Maintenance

Please follow the recommendations in this guide to retain the fresh look and protect the finish of the floor. After installing the floor, we recommend a first cleaning to remove any loose dirt or debris that may have been introduced during the installation process. Also, to protect the flooring surface from abrasive dirt and debris, we recommend installing an effective barrier system at outside doorways to limit the amount of moisture, dirt, and grit that may enter the flooring area. Be sure to check any new cleaning agents on a small test patch of the floor in an inconspicuous area, and do not under any circumstances use harsh cleaners or ammonia based cleaning products.

1. First, sweep or vacuum the floor surface to ensure removal of all loose dust, dirt, and debris. Do not use a beater bar on the vacuum, and ensure any broom used is for indoor use only. Using a damp mop, scrub the flooring surface using warm, clean water, rung out several times or as needed. Then use a dry mop or wet vacuum to remove any water and allow to dry.
2. Do not allow pets with unclipped nails to damage your Luxury Plank flooring, it may result in severe scratching to the surface. High heeled shoes without proper protection on the heel are also likely to cause damage to the flooring

surface.

3. Avoid exposure to direct sunlight for prolonged periods of time. During peak sunlight hours, use drapes or blinds to minimize direct sunlight on the Luxury Plank flooring. Failure to do so may result in discoloration, or overheating of the floor leading to expansion issues. In addition, excessive temperatures are not recommended. Long term continuous inside temperatures over 95°F combined with strong direct sunlight will damage the flooring and cause the installation to fail. Post-installation temperature must be maintained between 65°F and 90°F, and relative humidity must be maintained between 40% and 70%. Some natural ventilation or intermittent air conditioning in vacant homes should be considered to maintain proper temperature conditions.
4. Do not wax your flooring. The surface of your floor is very dense and nonporous, which prevents wax from penetrating and thus builds up a bed for yellowing and dirt collection. The same nonporous feature provides all the protection against wear and staining that you will need.
5. If your floor has been exposed to excessive amounts of water due to flooding, do not panic, Luxury Plank is waterproof. Simply remove the water as quickly as possible. A dehumidifier should be promptly turned on in the room to reduce the moisture levels back to normal. Do not dry the room below the normal moisture level that existed previously.



- PLEASE NOTE -

The use of a tapping block is not necessary to install your floor. The use of a tapping block, pull bar, and rubber mallet must be used delicately to not damage the connection system or physical appearance of the floor. Damage resulting from misuse of a tapping block or mallet will not be accepted and all warranty coverage will be void for material affected.